

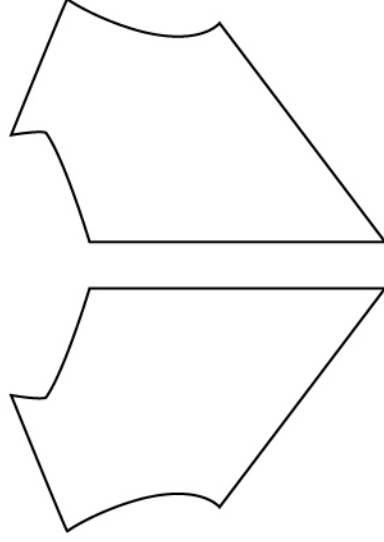
cut 2

front chest

A

front chest

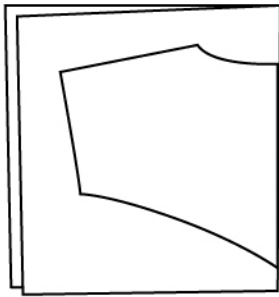
B



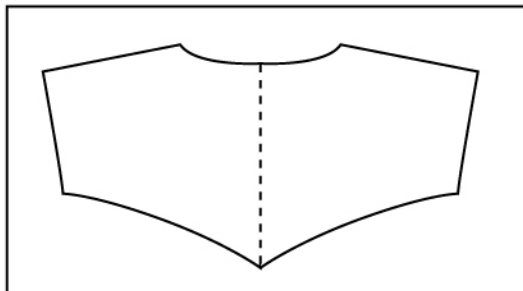
cut 2

(seam allowance included)

back
piece
A



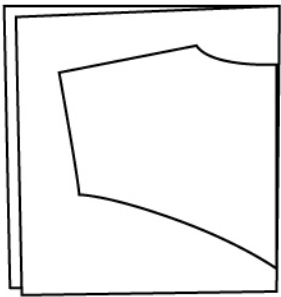
use one
half and fold
fabric



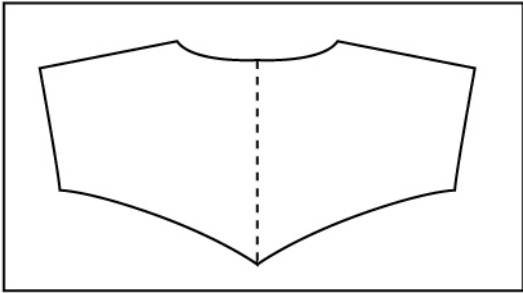
mirror back piece for full pattern

(seam allowance included)

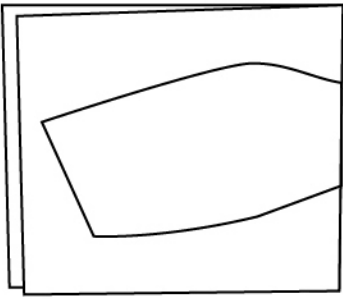
back
piece
B



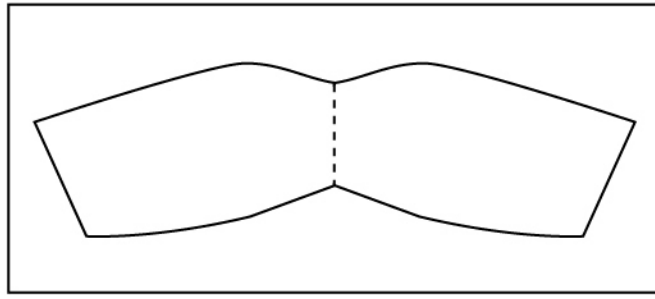
use one
half and fold
fabric



mirror back piece for full pattern



use one
half and fold
fabric



mirror collar piece for full pattern

edge

collar A

neckline

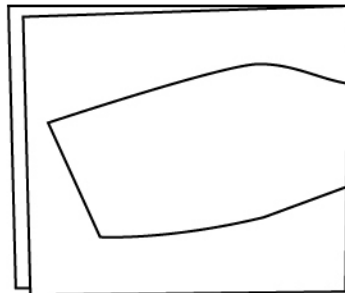
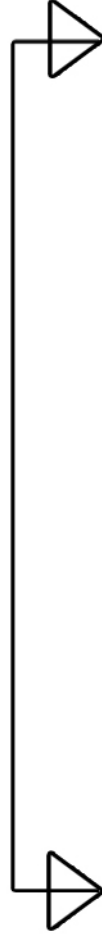
(seam allowance included)

(seam allowance included)

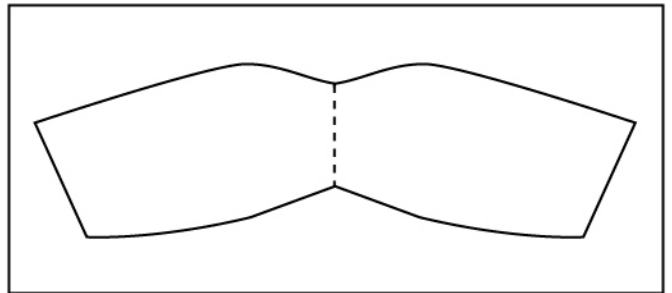
edge

collar B

neckline



use one
half and fold
fabric



mirror collar piece for full pattern