

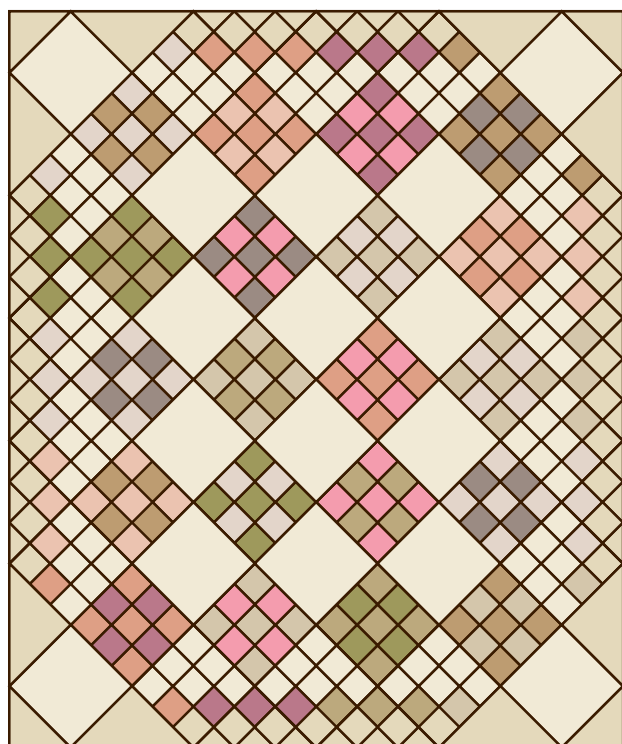


Showcase the vibrant Miniature Menagerie machine embroidery designs from Urban Threads in this beautiful bug-collection quilt! Butterflies, moths, dragonflies, and more enchanting insects are framed and complemented by colorful patchwork blocks.

This pretty, all-natural quilt is a delight to stitch, and to display. Perfect for a picnic in the great outdoors, or just a splash of summery home decor!



Finished Quilt Size - 63.5" x 76.5"



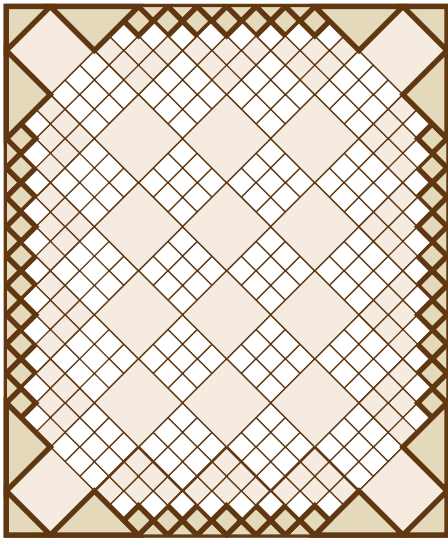
Number of Blocks

- 20 center blocks 9"x 9"
- 14 border blocks 9" x 9"
- 12 embroidered blocks 9" x 9"
- 10 outer border triangles
- 4 large outer corners made from:
 - 8 large triangles
 - 4 small triangles
 - 4 squares

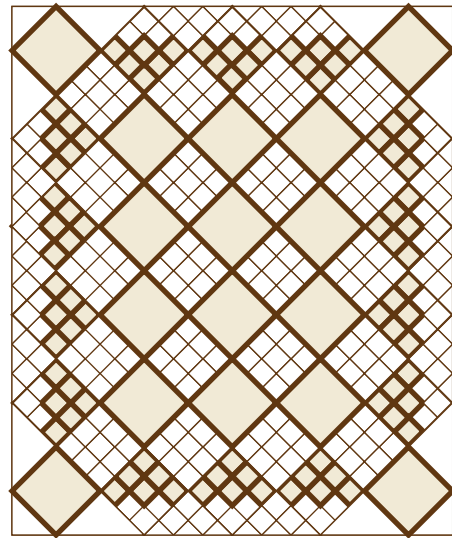
FABRIC	YARDAGE	CUT
1	1/4 yard	20 3.5" squares
2	1/3 yard	24 3.5" squares
3	1/4 yard	21 3.5" squares
4	1/4 yard	15 3.5" squares
5	1/3 yard	29 3.5" squares
6	1/4 yard	20 3.5" squares
7	1/4 yard	20 3.5" squares
8	1/4 yard	17 3.5" squares
9	3/8 yard	35 3.5" squares
10	1/4 yard	17 3.5" squares

FABRIC	YARDAGE	CUT
Embroidery Fabric	1 yard + EXTRA FOR HOOPING	12 9.5" squares EMBROIDER THEN CUT
Inner Border	1 yard	4 9.5" squares
		84 3.5" squares
Outer Border	1 yard	2 7.25" squares CUT IN HALF DIAGONALLY
		2 14" squares CUT IN QUARTERS DIAGONALLY
		34 3.5" squares
		8 5.5" squares CUT IN QUARTERS DIAGONALLY

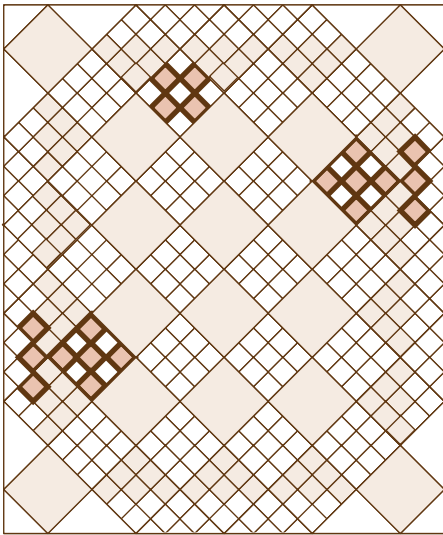
Batting	Larger than 64" x 77"
Backing	4 yards 45" wide
Binding	2 yards 45" wide



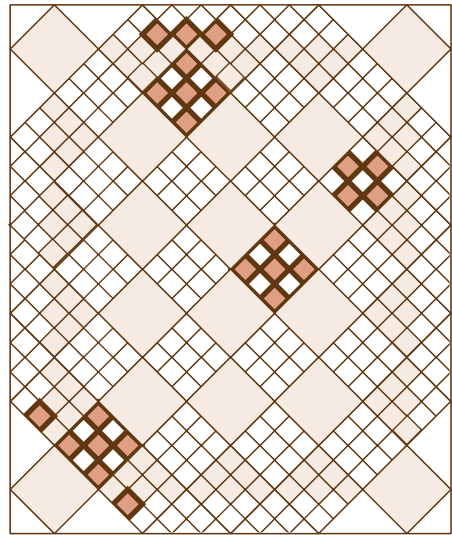
Outer Border



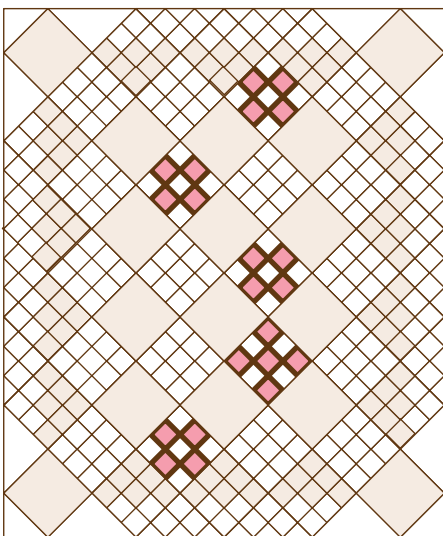
Inner Border & Embroidery Blocks



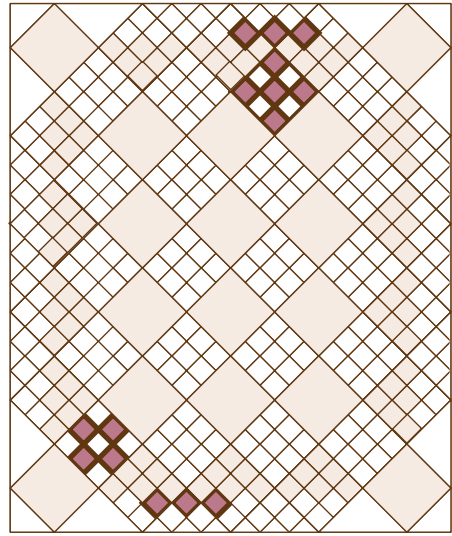
Fabric 1



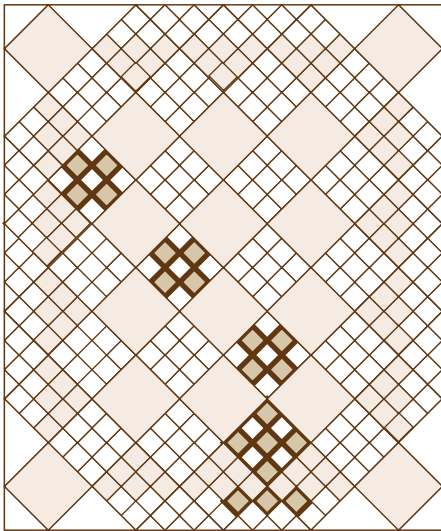
Fabric 2



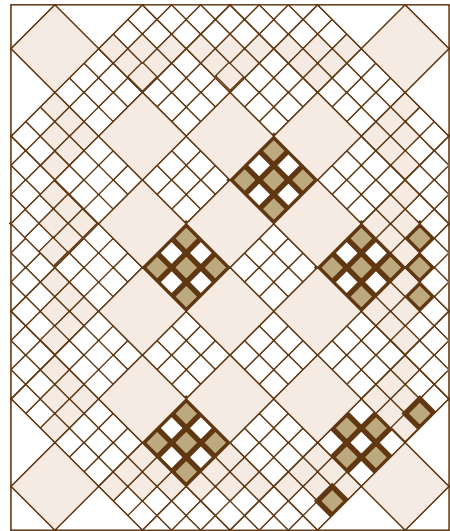
Fabric 3



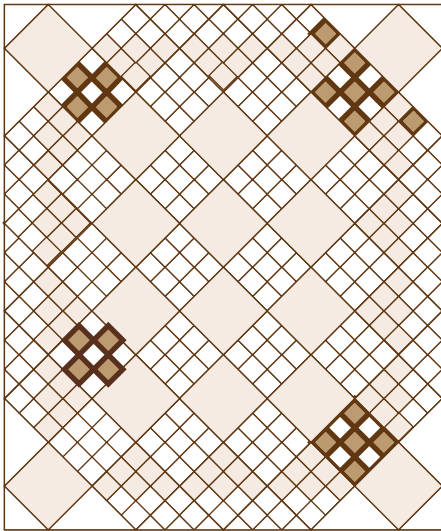
Fabric 4



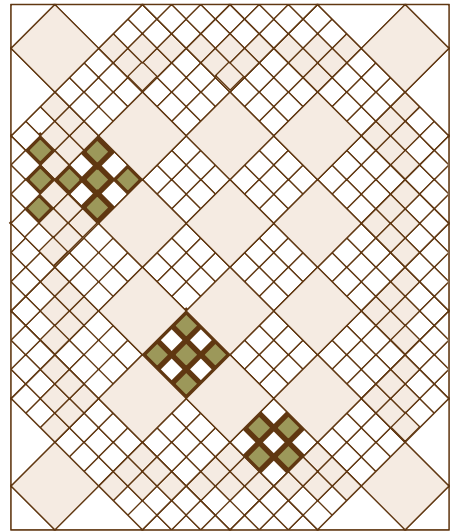
Fabric 5



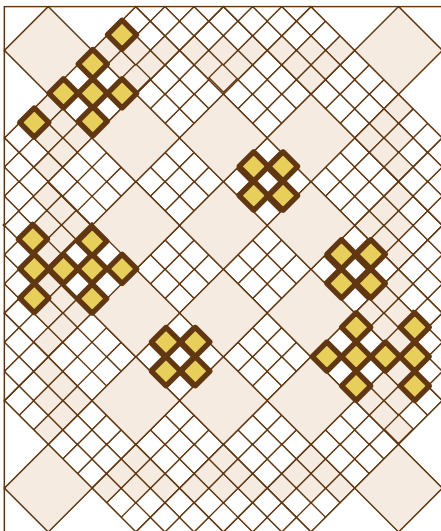
Fabric 6



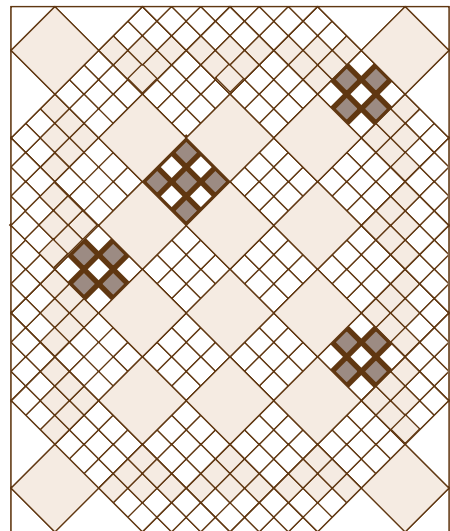
Fabric 7



Fabric 8



Fabric 9



Fabric 10

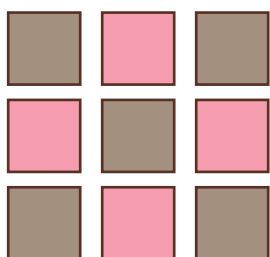
Plan

This quilt is designed with multiple patterns of 9-piece blocks to frame the **Miniature Menagerie** embroidery designs from Urban Threads. These blocks can be made with fewer colors of fabric and rearranged as desired. The exact color layout is shown on pages 3-4. Use a 1/4" seam allowance throughout.

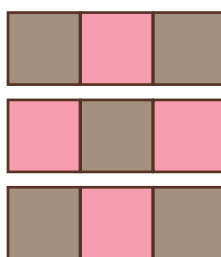
Sew

- 1 Start with the center color quilt blocks. Sew 20 blocks. For each step, follow color layout diagram on previous pages or arrange colors as desired.**

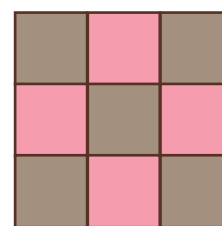
Arrange squares.



Sew pieces across.

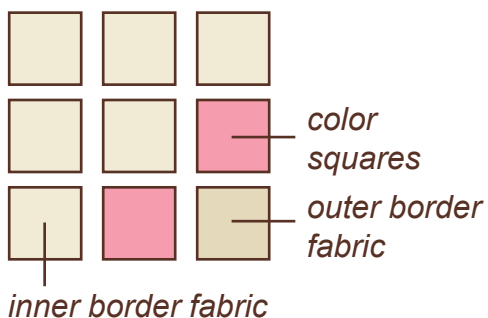


Sew strips together.

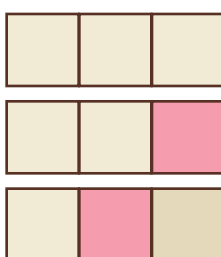


- 2 Sew border blocks. Sew 14 blocks. To achieve border effect, follow layout below.**

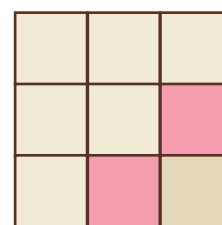
Arrange squares as shown below.



Sew pieces across.

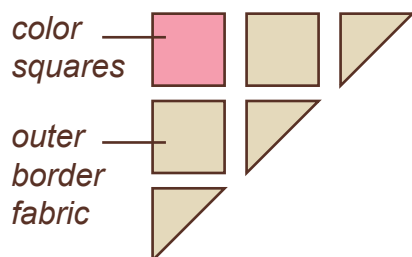


Sew strips together.

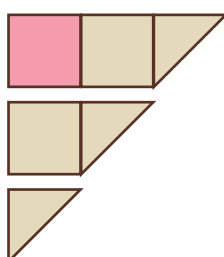


- 3 Assemble 10 outer border triangles.**

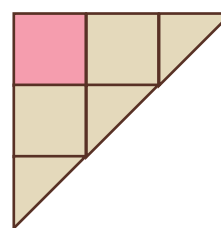
Arrange pieces as shown below.



Sew pieces across.

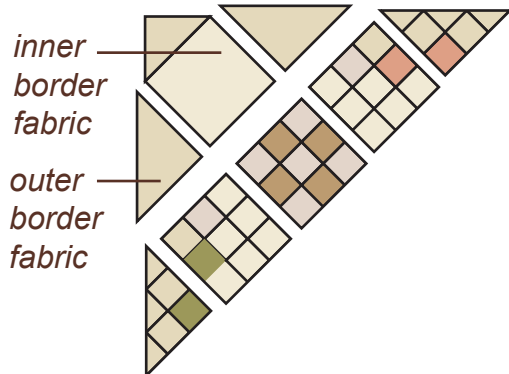


Sew strips together.

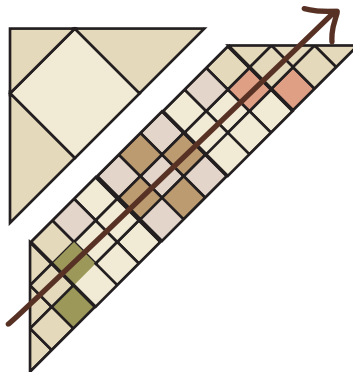


4 Sew 4 large outer quilt corners.

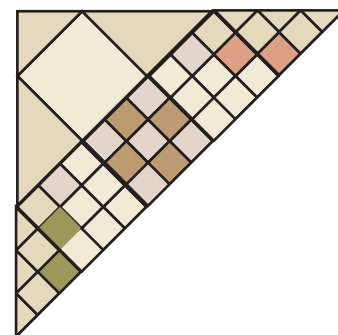
Sew outer border triangles onto large square of inner border fabric.



Sew blocks across with outer border triangles.



Sew outer corner and row of blocks together.



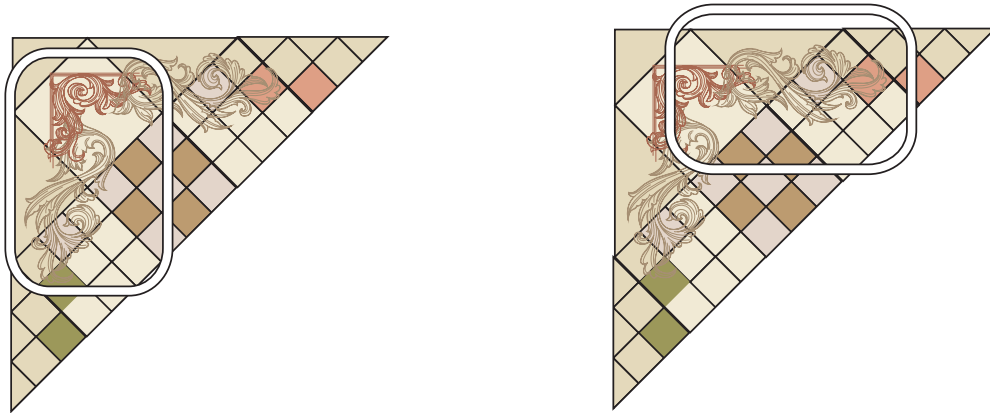
EMBROIDERY

- 5 Hoop fabric for embroidered blocks together with cutaway stabilizer, and embroider designs for 12 blocks. The quilt shown here uses the 6 colorful designs from Urban Threads' Miniature Menagerie embroidery design pack (5.86" x 9.40" size), each stitched twice in different colors. After embroidering, either trim the stabilizer around the edge of the design, or leave it to cover the back of the whole block.



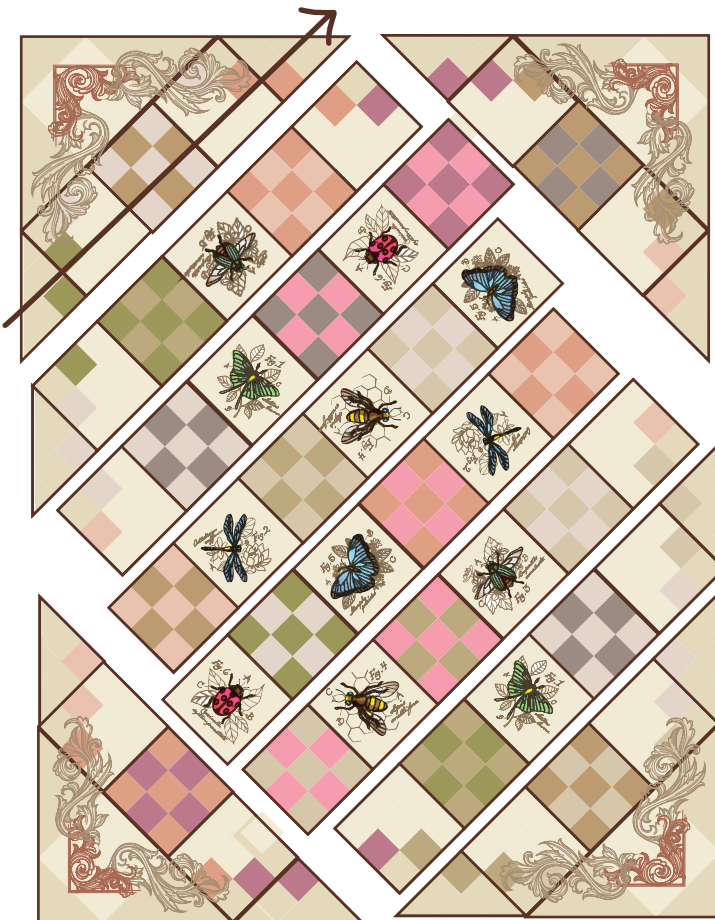
- 6 After embroidery is complete, cut 12 squares 9.5" x 9.5", with the embroidery designs in the center.

7 Hoop large outer corner triangles with cutaway stabilizer, and embroider as desired. The designs used here are the corner and flourish designs from the Miniature Menagerie pack. Re-hoop and add more designs as desired. These light-stitching designs are perfect for layering and collaging, so go crazy embroidering anywhere and everywhere!

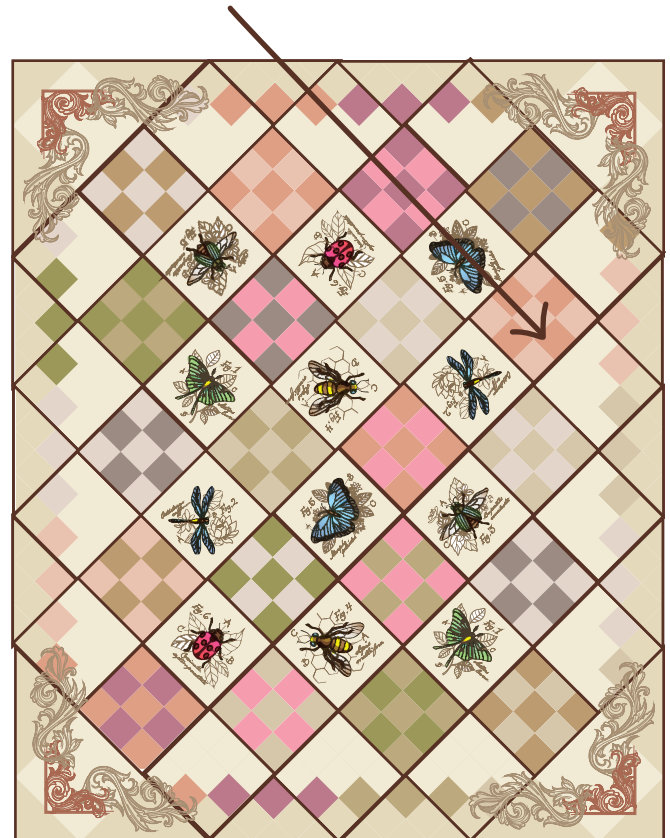


SEW

8 Arrange finished quilt blocks, outer border triangles, and large outer corners in desired layout. Assemble quilt blocks across in rows.



9 Sew rows together, in a similar fashion to the 9-piece quilt block. Sew on final outer corners to finish.



10 Layer, baste and quilt as desired. This quilt was “stitched in the ditch” so there was no distraction from the embroidery designs.

11 Trim excess batting and backing from the edges of the quilt. Cut 2.5” wide strips for binding. Sew end to end to make up a length of 290 inches – the perimeter of your quilt, plus a bit extra. Press in half lengthwise, wrong sides together. Align the raw edge of the binding with the raw edge of the quilt, and stitch in place. Flip binding over to back of quilt, and hand-stitch in place. Enjoy your quilt!

